

- LEGEND
- COUNTY LINE
 - CORPORATE LIMITS
 - STATE TRUNKLINE
 - COUNTY PRIMARY
 - COUNTY LOCAL
 - ADJACENT COUNTY
 - CITY OR VILLAGE STREET

PRIMARY ROAD SYSTEM IS 7.16 MILES
 LOCAL ROAD SYSTEM IS 39.00 MILES

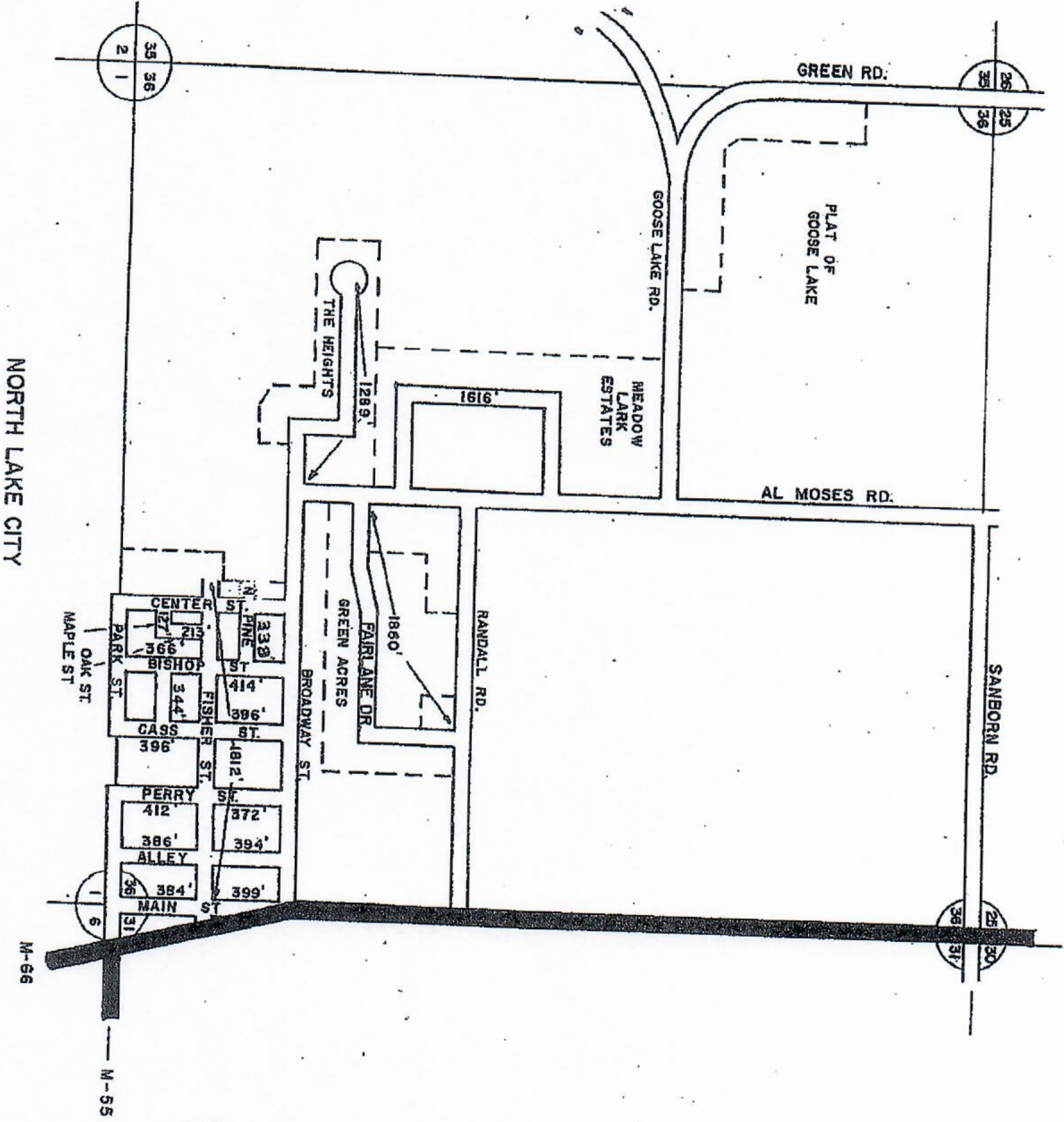
I HEREBY CERTIFY THAT THE
 ROADS SHOWN HEREON BY SYMBOL
 OR IN RED AS PRIMARY ROADS AND
 THOSE SHOWN HEREON BY SYMBOL
 OR IN GREEN AS LOCAL ARE IN USE
 AND ARE UNDER THE JURISDICTION
 OF THE COUNTY ROAD COMMISSION.

CHAIRMAN _____ DATE _____

SCALE 0 1/2 1 MILE
 ONE INCH EQUALS 3000 FT.

CALDWELL TWP
 T23N-R6W
 MISSOURI CO.

13	14	15	16
5	6	7	8
1	2	3	4



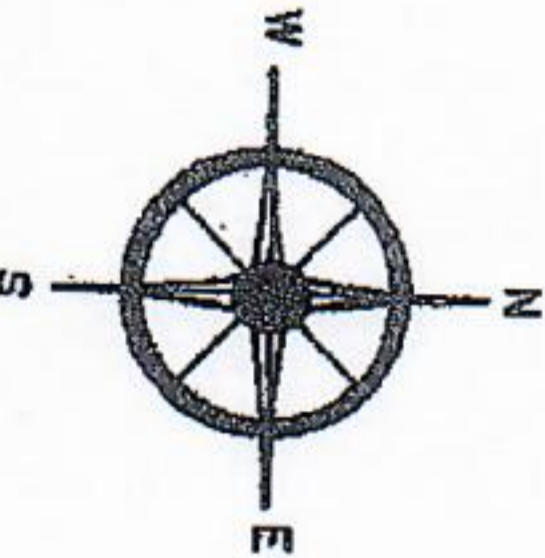
NORTH LAKE CITY

- LEGEND
- COUNTY LINE
 - CORPORATE LIMITS
 - STATE TRUNKLINE
 - COUNTY PRIMARY
 - COUNTY LOCAL
 - ADJACENT COUNTY CITY OR VILLAGE STREET

TOTAL FEET 4,518 EQUALS 2.18 MI.

I HEREBY CERTIFY THAT THE ROADS SHOWN HEREON BY SYMBOL OR IN GREEN AS LOCAL ROADS ARE IN USE AND ARE UNDER THE JURISDICTION OF THE COUNTY ROAD COMMISSION.

CHAIRMAN _____ DATE _____



TOWNSHIP CALDWELL
SECTION 36 T 23N R 8W
COUNTY MISSAUKEE